



Jamie Witherspoon, P.Eng. – President  
 Consultant Project Manager  
 WT Infrastructure Solutions Inc.  
[jamie.witherspoon@wtinfrastructure.ca](mailto:jamie.witherspoon@wtinfrastructure.ca)

# SHEDDEN WASTEWATER TREATMENT PLANT

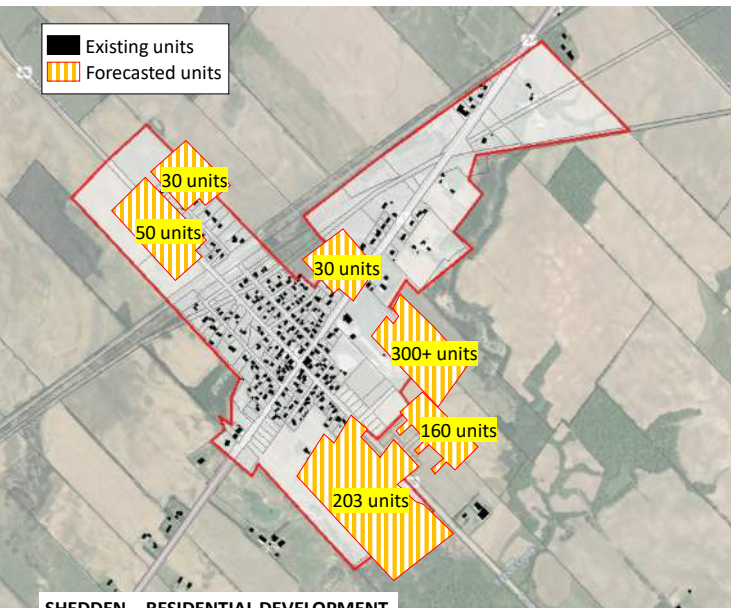
Public Information Centre  
 February 19<sup>th</sup>, 2025  
**WELCOME!**



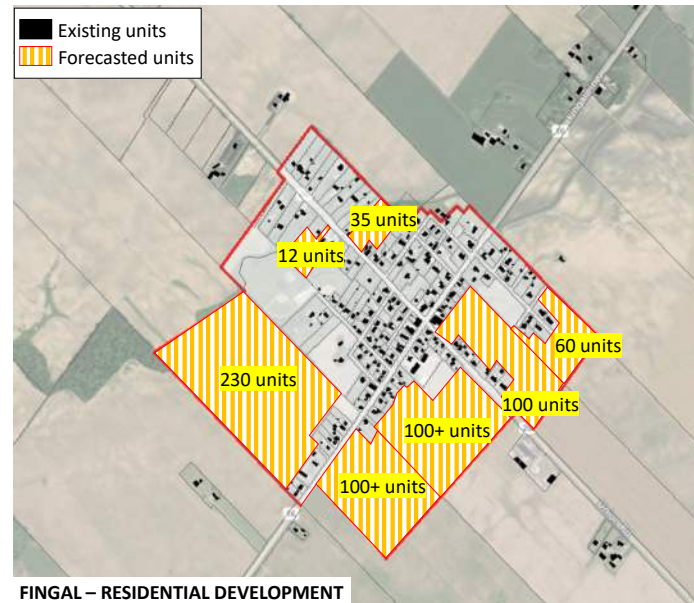
Aaron VanOorspronk, L.E.T.  
 Director of Infrastructure and Development Services  
 Township of Southwold  
[development@southwold.ca](mailto:development@southwold.ca)

The Township of Southwold welcomes you to this Public Information Centre (PIC) so that we can update the community on findings to date, project status and next steps.

## SHEDDEN WASTEWATER TREATMENT PLANT SERVICE AREA



SHEDDEN – RESIDENTIAL DEVELOPMENT



FINGAL – RESIDENTIAL DEVELOPMENT

### 20-YEAR FORECASTED GROWTH

#### SHEDDEN

- New Residential Development = over 800 units
- Existing Residential = 406 units

#### FINGAL

- New Residential Development = over 1000 units
- Existing Residential Units = 370 units



Please review the material and let us know if you may have any questions. Staff are available to answer your questions and receive your comments.

**Thank you for attending this Public Information Centre!**

# SHEDDEN WWTP PROJECT OVERVIEW



## WHAT ARE WE DOING?

This project is intended to support the forecasted growth within the communities of Shedden and Fingal by establishing a new WWTP to service both communities and meet the projected demands for growth.



## WHY ARE WE DOING IT?

The communities of Shedden and Fingal are experiencing propositions for residential growth. Both communities are presently serviced by a municipal drinking water system via regional supply, while wastewater servicing is provided by individual septic systems. This project is intended to support the forecasted growth within the communities by establishing a new WWTP to service both communities and meet the projected demands for growth.



## WHAT DOES THIS PROJECT MEAN TO YOU?

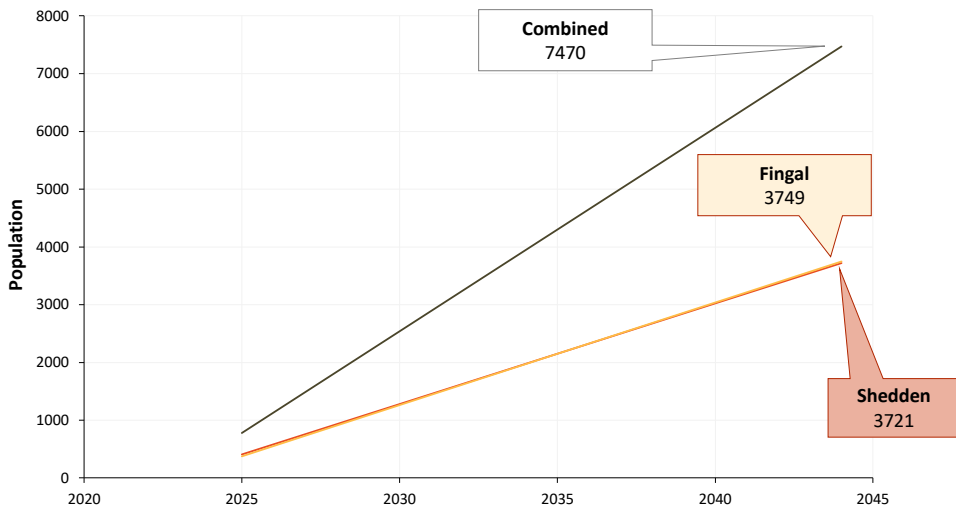
A new plant can accommodate the growing population and increasing wastewater volumes, ensuring reliable service for years to come. Enhanced treatment processes ensure cleaner water is discharged into surface water, reducing pollution and protecting aquatic ecosystems. Measures to minimize environmental impacts during construction are being considered.

## PROJECT DRIVERS AND LOCATION



### COMMUNITY GROWTH

The Township of Southwold has experienced population growth within the last few years. Population within the Township boundaries is growing faster and it is expected to continue to grow over the long term.

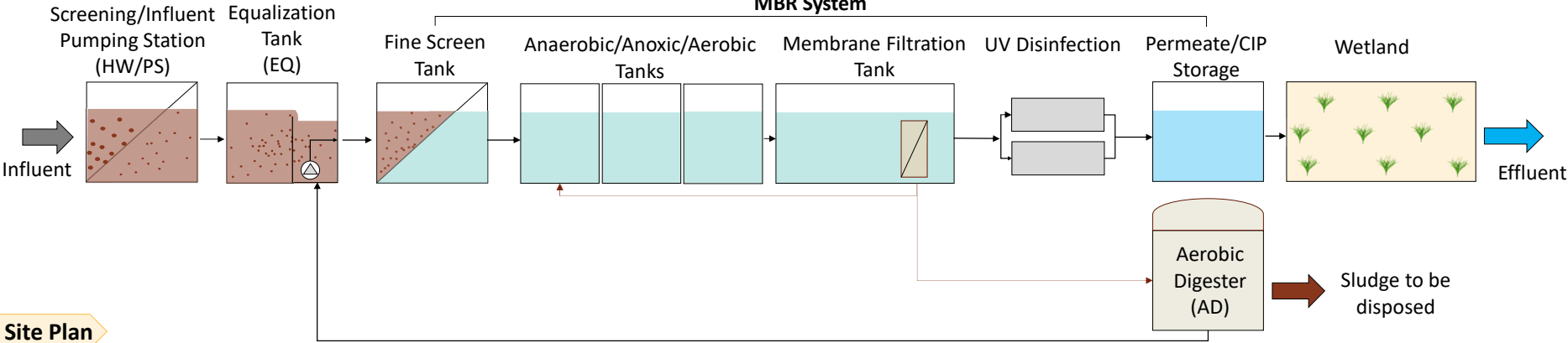


### PROJECT LOCATION

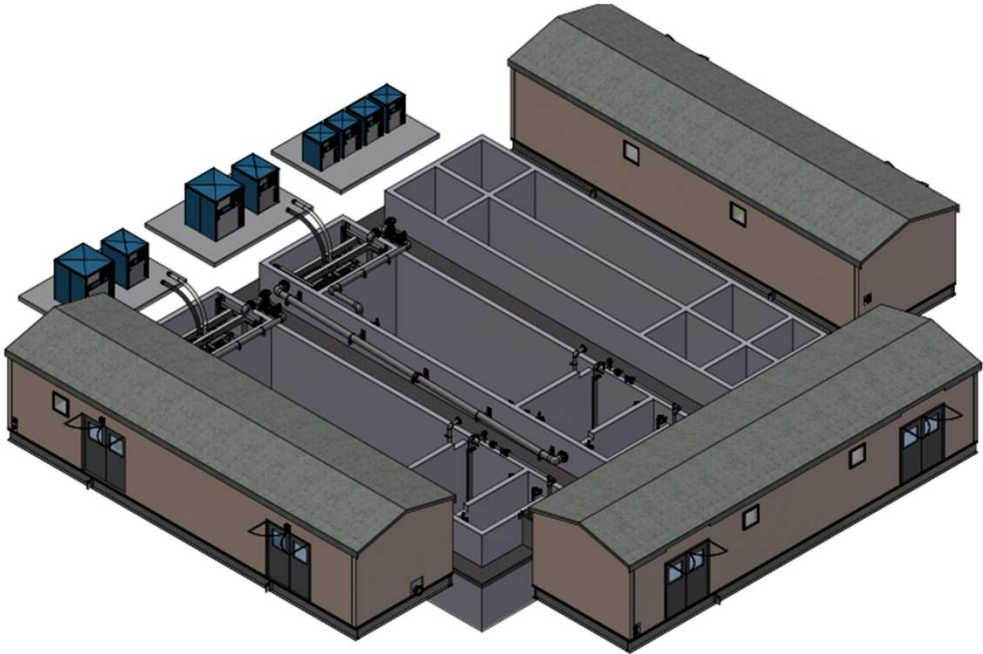
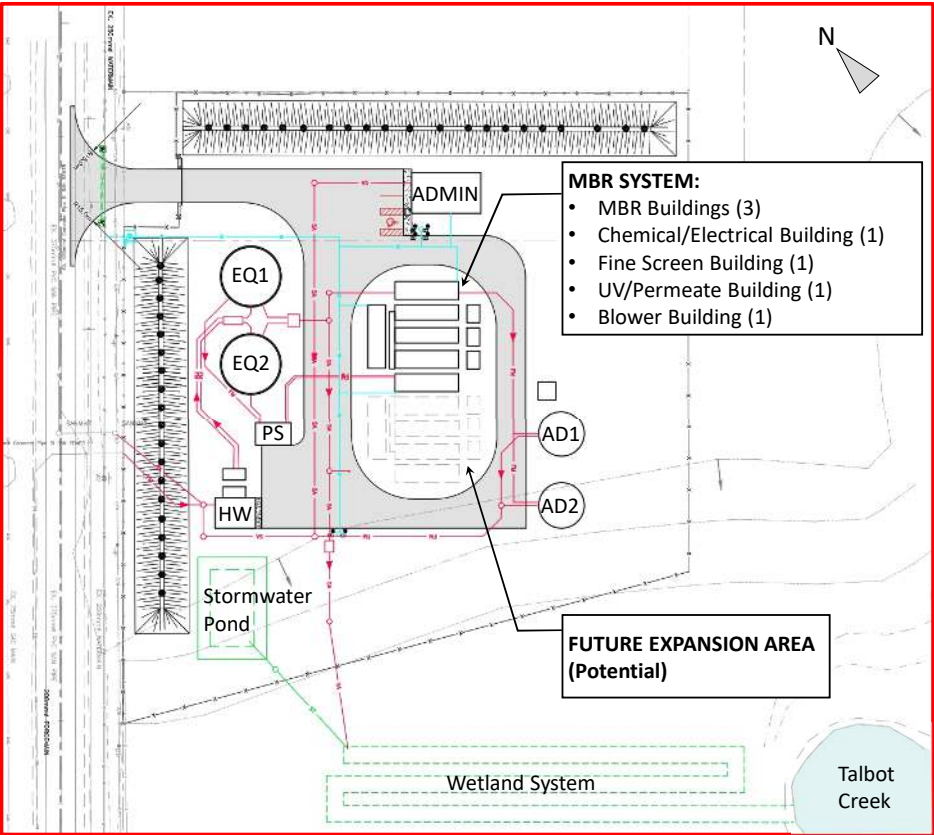


# SHEDDEN WWTP SYSTEM COMPONENTS

## Process Flow



## Site Plan



## Treatment Plant Rendering

# SHEDDEN WWTP STATUS UPDATE

- **PROJECT STATUS**

- Municipal Class Environmental Assessment was completed in 2021
- Preselected Equipment for main treatment components have been selected.
- Detailed Design is ongoing

- **BUDGET**

- Estimated Capital Cost of \$22 million (+/- 15%)
- Township secured 73% funding for the project through the Housing-Enabling Water Systems (HEWS) Fund.
- Remainder of capital cost will be recovered through connection fees.
- Estimated Connection Fee per residence ~ \$20,000

- **IMPLEMENTATION SCHEDULE**

- Tender issue planned for Summer 2025
- Shovels in the ground – Fall 2025
- First connections - Fall 2026
- Project Completion - Spring 2027