

Talbotville & Ferndale Master Servicing Plan Environmental Assessment Addendum



TOWNSHIP OF
Southwold



Notice of Addendum: November 2022



TOWNSHIP OF
Southwold



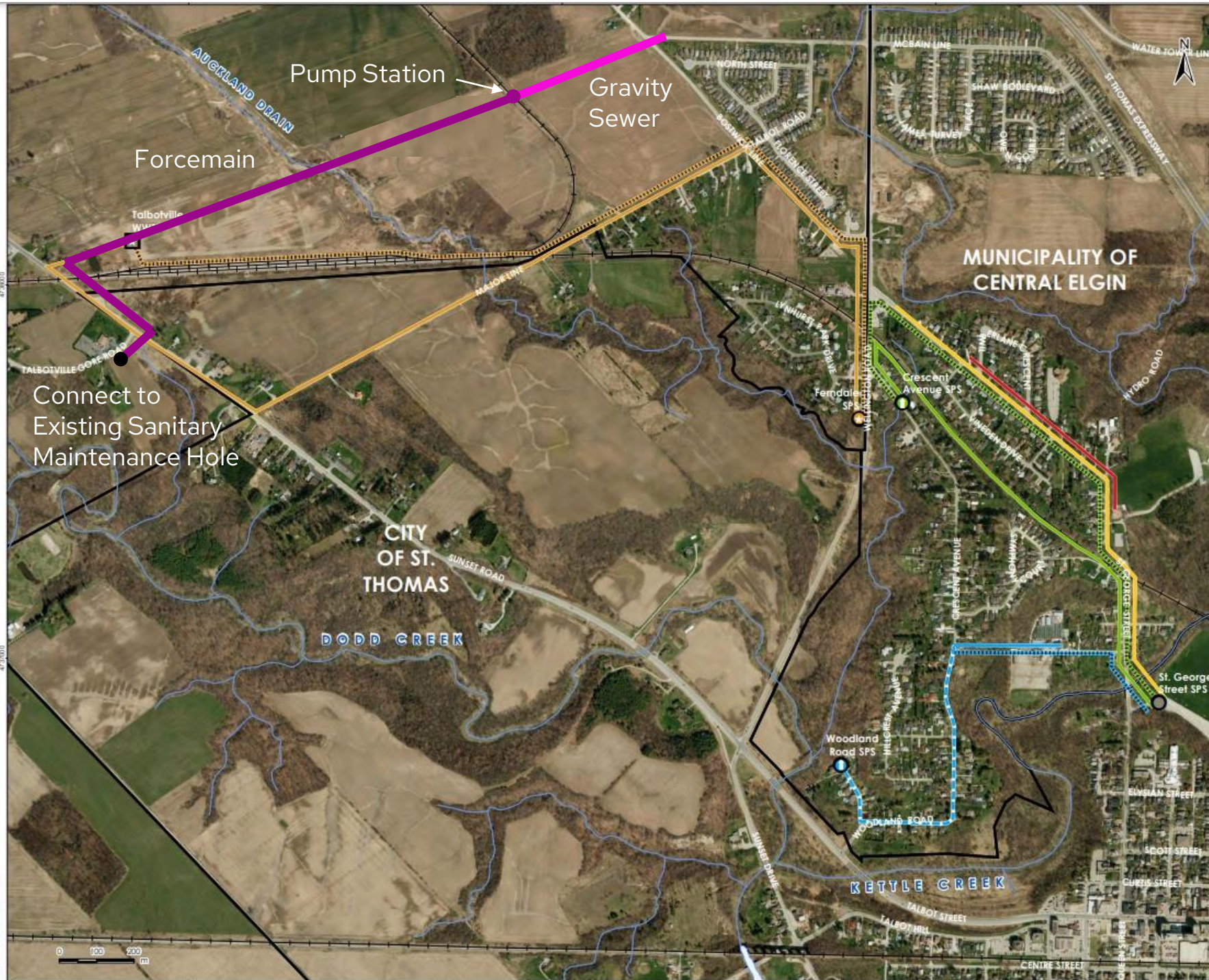
Talbotville & Ferndale Master Servicing Plan

Water / Wastewater /
Stormwater Management

Southwold, Ontario

May 7, 2015

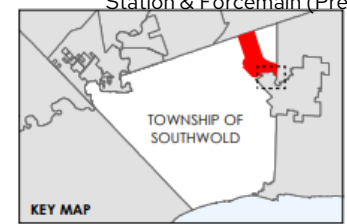




TOWNSHIP OF
Southwold



- Watercourse
- ▭ Municipality
- Facility**
- Pumping Station - Existing
- ⊕ Pumping Station - New
- ⊖ Pumping Station - Upgraded
- Wastewater Treatment Facility - New
- Wastewater Servicing Alternatives**
- Alternative 1 - Partial upgrades of St. George Street sewer
- Alternative 2 - Twin St. George Street gravity sewer
- Alternative 3a/3b (existing)
- Alternative 3a - Redirect flow from Woodland Road PS to Parkins Street sewer
- Alternative 3b - Redirect flow from Woodland Road PS to St. George Street PS
- Alternative 4a - Redirect flows from Crescent Avenue PS via railway
- Alternative 4b - Redirect flows from Crescent Avenue PS via St. George Street
- Alternative 5a - New PS to Talbotville via Major Line
- Alternative 5b - New PS to Talbotville via railway
- Alternative F9 - Sanitary Sewer, Pump Station & Forcemain (Preferred Option)



- Notes**
- Coordinate System: NAD 1983 UTM Zone 17N
 - Base features produced under license with the Ontario Ministry of Natural Resources © Queen's Printer for Ontario, 2013.
 - Orthoimagery © First Base Solutions, 2014.

December 2014
143300796

Client/Project
Township of Southwold
Talbotville & Ferdale
Master Servicing Plan

Figure No.
8.1

Title
Ferdale Wastewater Servicing Alternatives

V:\116155\active\143300796_Southwold_MPS\planning\dw\wp\GIS\WKO\Tech_Aemo\143300796_Sanitary_Ferdale.mxd
 Revised: 2014/12/15 By: Mouchon

Talbotville & Ferndale Master Servicing Plan

Original Ferndale Servicing

8.7.1 Preferred Alternative (Ferndale)

The preferred alternative for wastewater servicing within Ferndale would be to continue to send existing wastewater flows to the St. Thomas WWTP. This option is contingent upon the capacity available within the St. George Street sewer system.

As determined through a desktop review of the existing sanitary sewer catchment area as well as proposed development, a sanitary design sheet was created. Through this exercise, it was observed that while some sections appeared to be able to accommodate some flow (before reaching 100%), through discussions with the Municipality of Central Elgin, the sewer is considered to be at capacity when it reaches 80%. Therefore, the St. George Street sewer is considered to be constrained, and in order to convey flows from new development in Ferndale to the St. Thomas WWTP, modifications to the existing sewershed are required, or flows should be directed to a new wastewater treatment plant in Talbotville. By directing flows to Talbotville, it would allow the Township to control the rate of its development with no restrictions potentially imposed by servicing agreements. However, this option would depend on the completion of a Schedule C Class EA, the construction of a new wastewater treatment plant in Talbotville, as well as the construction of a pumping station and forcemain in Ferndale.

Therefore, in order to accommodate development in Ferndale, the Township may wish to undertake either Alternative F5 to redirect wastewater flows from the Woodland Road Pumping Station to the Parkins Street sewer or Alternative F6 to redirect sanitary flows from the Crescent Avenue Pumping Station via the CN right of way.

Note: The wastewater flows outlined in the “ Talbotville Wastewater Treatment Plant Schedule Class EA – February 2016” from future development in Ferndale to the wastewater treatment plant remain unchanged.

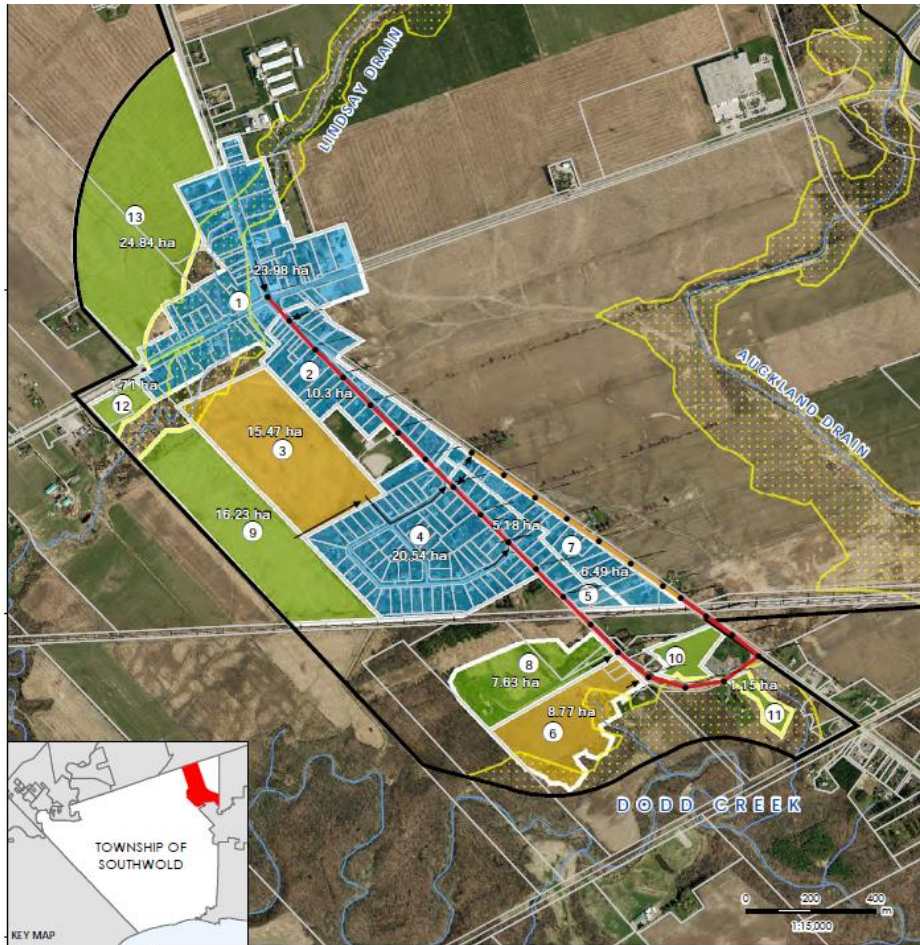


TOWNSHIP OF
Southwold

Catchment Areas for Wastewater Treatment Plant



Talbotville



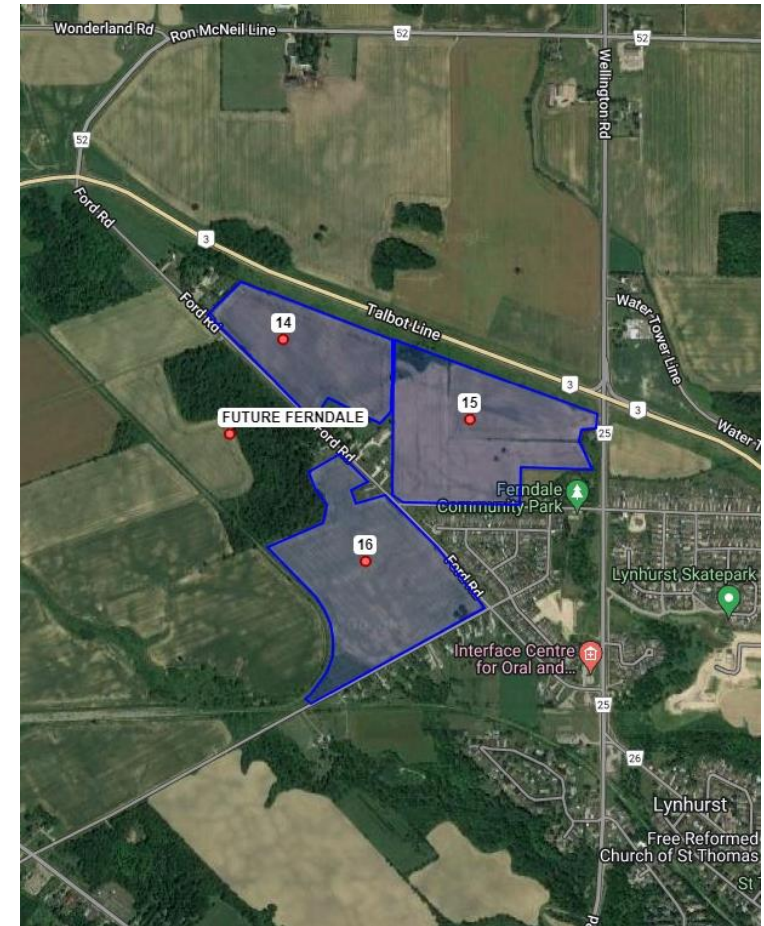
Notes

- Coordinate System: NAD 1983 UTM Zone 17N
- Base features produced under license with the Ontario Ministry of Natural Resources & Queen's Printer for Ontario, 2015.
- 2010 orthoimagery © Res1 Base Solutions, 2015.

Legend

Settlement Area/Study Area	Proposed Sanitary Sewer	Existing Development
Parcel	Sunset Rd. Trunk	Proposed Development
Approximate Regulated Area	Talbotville Gore Rd. Trunk	Future Development
Flow Arrow	Proposed Sanitary Manhole	

Ferndale



Future Ferndale Development

Preferred Ferndale Servicing Alternative F9 – Sanitary Sewer, Pump Station and Forcemain

