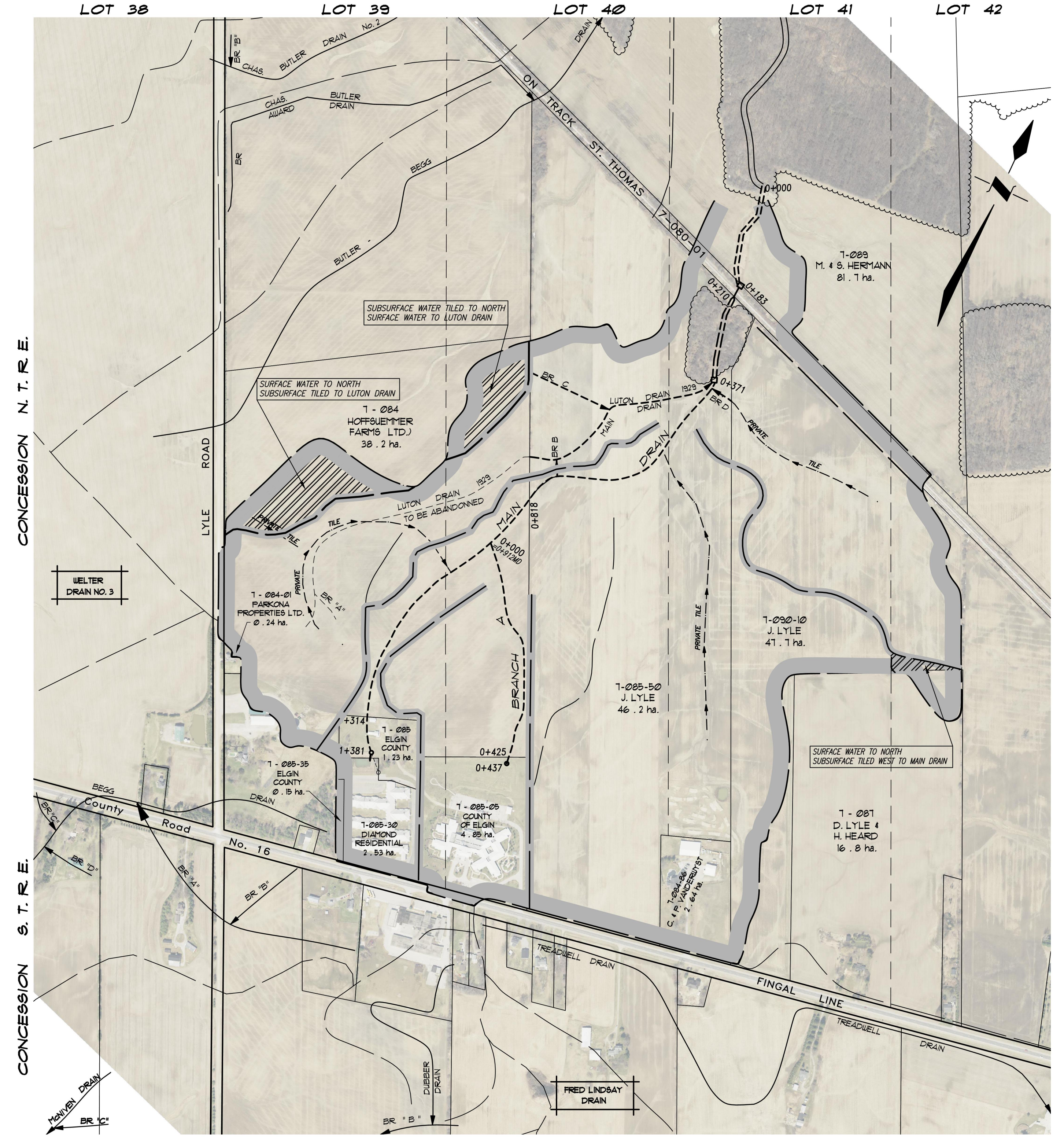


GENERAL NOTES
THE WORKING WIDTH FOR PURPOSES OF FUTURE MAINTENANCE SHALL BE NOT EXCEED THE FOLLOWING
AVERAGE WIDTHS - 15 meters INCLUDING 3m BUFFER STRIP
OPEN PORTIONS-BUSH AREAS - 10 meters
CLOSED PORTIONS (THROUGH BUSH) - 34 meters (5m FROM EACH TILE)



PLAN LEGEND

- LIMIT OF WATERSHED AREA
- - - PROPOSED DRAINAGE WORKS
- - - EXTERIOR OR INTERIOR WATERSHED
- - - EXIST. DRAIN TO BE INCLUDED/INCORPORATED
- - - EXIST. MUNICIPAL DRAIN
- - - PRIVATE TILE
- - - EXIST. WATERCOURSE OR PRIVATE DITCH
- - - 10 - 275 ASSESSMENT ROLL NUMBER
- - - 10 - 9176 CONVEYANCE NAME
- - - 40 - 5 ha. HECTARES OWNED
- - - BUSH AREA

LUTON DRAIN 2022
TOWNSHIP OF SOUTHWOLD

Drainage Superintendent: BRENT CLUTTERBUCK
519-769-2010

No.	REVISIONS	DATE

Drawn By: BW
Date: MAY 31, 2022
Field Book: D-225
JOB No.: 208211
Drawing No.: 1 of 1

SPRIET ASSOCIATES LIMITED
LONDON CONSULTING ENGINEERS
155 YORK STREET - LONDON (519) 672-4100 - NEA 148